

Counter Fitters

Custom Countertops

"Since 1993"

1026 Lynes Avenue Savannah, GA 31415

(912) 231-0103

www.counterfitterssav.com

16ga Premium Sinks

All sinks are not created equal...



TU002 'Atlas'
TU003 Reverse Option
Size 31 1/4" x 20 1/2" Depth 9" and 8"



TU004 'Ventura'
TU005 Reverse Option
Size 31 1/2" x 20 1/2" Depth 9" and 7"



TU006 'Vallant'
Size 31 3/4" x 18" Depth 9"



TU001 'Hercules'
Size 31 1/4" x 18" Depth 9" and 9"

These Kitchen Stainless Steel sinks are:

Superior Craftsmanship :: Double thick rubber pads :: Extra sprayed undercoating

Exclusive Bracket system :: Full 16ga tested thickness :: 304 commercial grade

Plus Limited lifetime warranty!

18ga Kitchen Sinks

All sinks are not created equal...



Model R01 50/50 Dimensions 31 1/4" x 18" Depth 9'9"



Model R04 70/30 R05 30/70 Dimensions 31 5/8 20 1/2" Depth 9'7"



Model R02 60/40 R03 40/60 Dimensions 31 1/4 x 20 1/2" Depth 9'7"



Model LE-199A Single Dimensions 31 3/8" x 18 1/4" Depth 9'

Counter Fitters

Custom Countertops

"Since 1993"

1026 Lynes Avenue

Savannah, GA 31415

(912) 231-0103

www.counterfitterssav.com

Bar Sinks



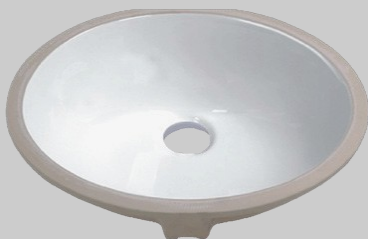
Model R010 15 X1 8 Depth 7"



Model TU0905 18 1/2 Depth 7"

Vanity Sinks

Available Colors: Black, Bisque, White.



Model CH-933 19 3/8 x 16 x 6 1/2



Model CH-400 18 x 14 x 5 1/4



Model CH-433 23 7/8 x 15 x 5 3/4

More Sinks AvailableAsk your sales associate!